

Lake Parks Information

SUMMARY OF RULES AND REGULATIONS

For your safety and enjoyment of the parks please observe the following rules:

1. No Glass Containers in designated areas or within 100 feet of the water.
2. No firearms or fireworks are permitted, including BB guns, air rifles, bow and arrow and paintball guns.
3. Campers must be at least 18 years of age or with a parent or guardian.
4. Motorized vehicles must always remain on roads/pavement. All vehicles must be street legal to be operated in the park. No ATV's, UTV's, Go-Carts, etc. Anyone operating a motorized vehicle must have a valid driver's license
5. Vehicles must maintain two wheels on road when parallel parking. Head-in parking off the pavement is not allowed.
6. No vehicle or camper washing.
7. Tent campers must present camping tent upon check-in.
8. Fires are allowed only in the areas that are designated. COLLECTING OR CUTTING WOOD IN THE PARKS IS PROHIBITED. Subject to City fines.
9. Camping is allowed in designated areas only.
10. Only two vehicles are permitted per campsite. Additional vehicles must be parked in overflow lots. No more than one wheeled camping unit is allowed per campsite.
11. Campsites are allowed a maximum of 8 guests at all times.
12. Quiet time is 10 pm. Loud noises and improper conduct are not permitted at any time.
13. Pets must always be leashed and attended to. Visitors with pets that present a threat or disturb other visitors will be asked to remove their pets from the park. PETS ARE NOT ALLOWED ON THE SWIMMING BEACHES OR PLAYGROUNDS at any time.
14. Reservations must be made for a minimum of two nights except holidays which require a 3-night minimum. Campsites will be assigned for walk-up reservations. Cancellation more than 14 days from day of reservation subject to \$10 cancellation fee. Cancellation 14 to 1 day from reservation - forfeit of the amount of one night's stay. Cancellation day of - no refund.

Please be considerate of your neighbor's rights and help us keep the park clean by disposing of your own trash. For further explanation of rules including policies not listed here, please speak with a park ranger or staff member.

Holidays are defined as: Easter, Memorial Day, July 4th, and Labor Day.

SUMMARY OF FEES: Fees subject to change

Annual Pass

\$125 Primary Pass
\$50 Secondary Pass
Family may purchase 2 maximum. May not be used on some special events.

LYNN CREEK PARK:

Vehicle Fees*

Grand Prairie Resident FREE w/valid driver's license (except holidays, special events and during Prairie Lights). Other restrictions may apply.

Non Resident \$20 per vehicle/day (up to 6 people)
Additional people \$2 each (Children 5 & under Free)
Boat launch fee Incl. w/ vehicle fee
Non Resident Senior** \$5/vehicle

LOYD PARK:

Vehicle Fees*

Regular \$20 per vehicle/day
Camping \$10 per vehicle/day
Boat launch fee Incl. w/ vehicle fee
Seniors** \$5/vehicle

Camping (Vehicle fee not included)

Campsite, basic \$25 - \$35 per night
Campsite, lake view \$30 - \$40 per night
Campsite, lake front \$40 - \$50 per night
Campsite, full hookup \$35 - \$50 per night
Group campsites \$275 per night
Group Picnic Pavilion \$75/day Mon. - Thurs.
\$200/day Fri. - Sun.
\$300/day Holidays & Holiday weekends

Check-in - 2 pm; Check-out - 12 pm
Campsites without a reservation will not be sold after 10 pm.

Cabins - (all cabin prices exclude tax)

1 bedroom \$150/night Mon.-Thurs.
\$175/night Fri.-Sun.
\$200/night Holidays & Holiday weekends
2 bedroom \$200/night Mon.-Thurs.
\$225/night Fri.-Sun.
\$250/night Holidays & Holiday weekends
Yurt \$250/night Sun. - Sat.

Check-in - 2 pm; Check-out - 11 am
One vehicle fee included for duration of stay

Lloyd Lodge (18-rooms) - Call or visit website

BRITTON PARK:

Vehicle fee: \$10 per vehicle/day

*Holidays/Event fees may apply
**A senior in a vehicle with non-seniors will be charged regular vehicle fees

Grand Prairie PARKS, ARTS & RECREATION

LAKE PARKS

JOE POOL LAKE



ENJOY YOUR STAY AT JOE POOL LAKE!



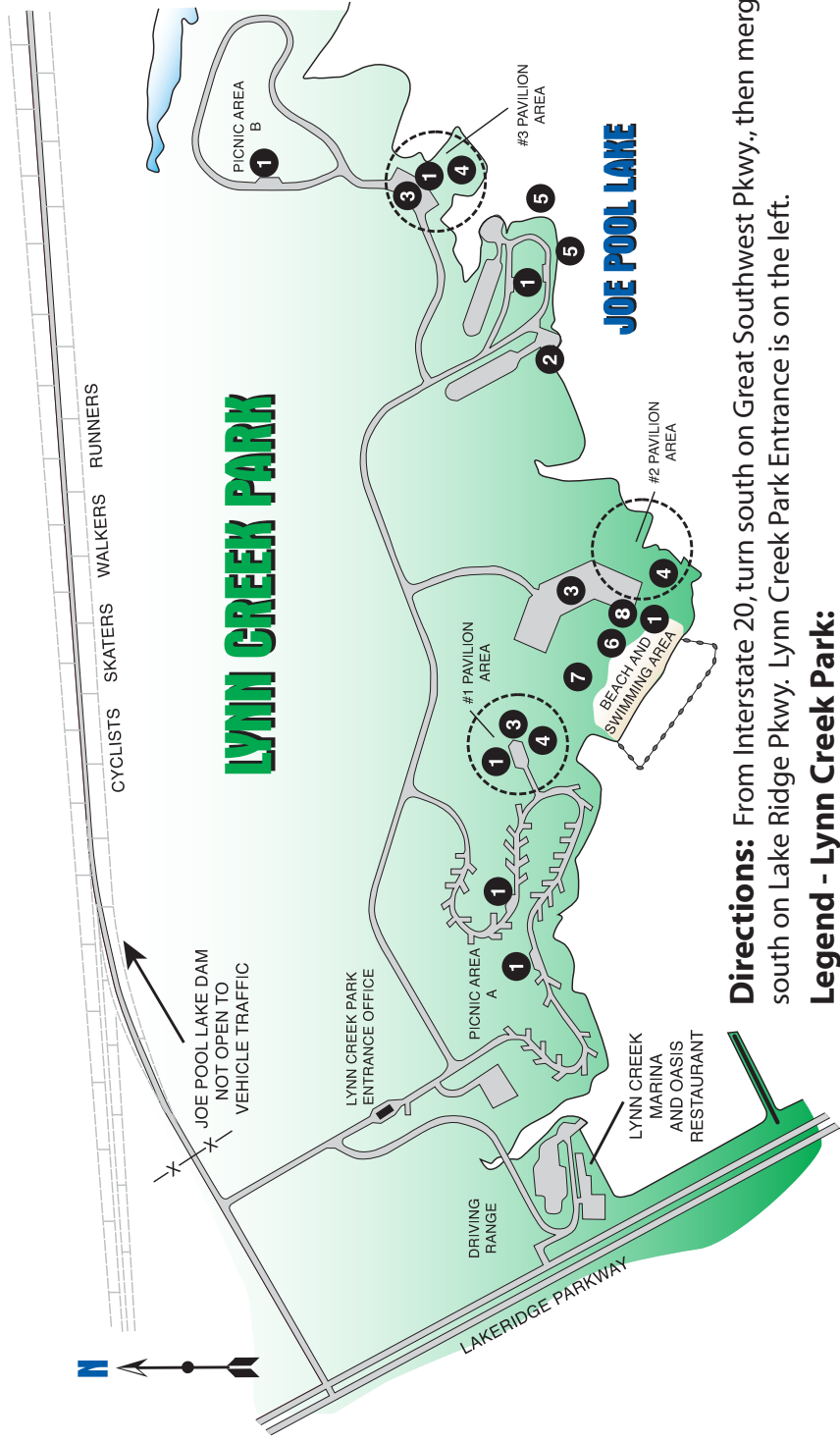
NRPA
Gold Medal Department
Grand Prairie Parks, Arts & Recreation

Lake Parks Administration Office
5610 Lake Ridge Pkwy.
Grand Prairie, TX 75052
GrandFunGP.com | LoydPark.com
For Reservations, call 972-237-4120

Grand Prairie Parks, Arts & Recreation Lake Parks Office

5610 Lake Ridge Pkwy., Grand Prairie, Texas 75052
GrandFunGP.com | LoydPark.com
For Reservations, call (972) 237-4120
Monday - Friday 8am-4:30pm

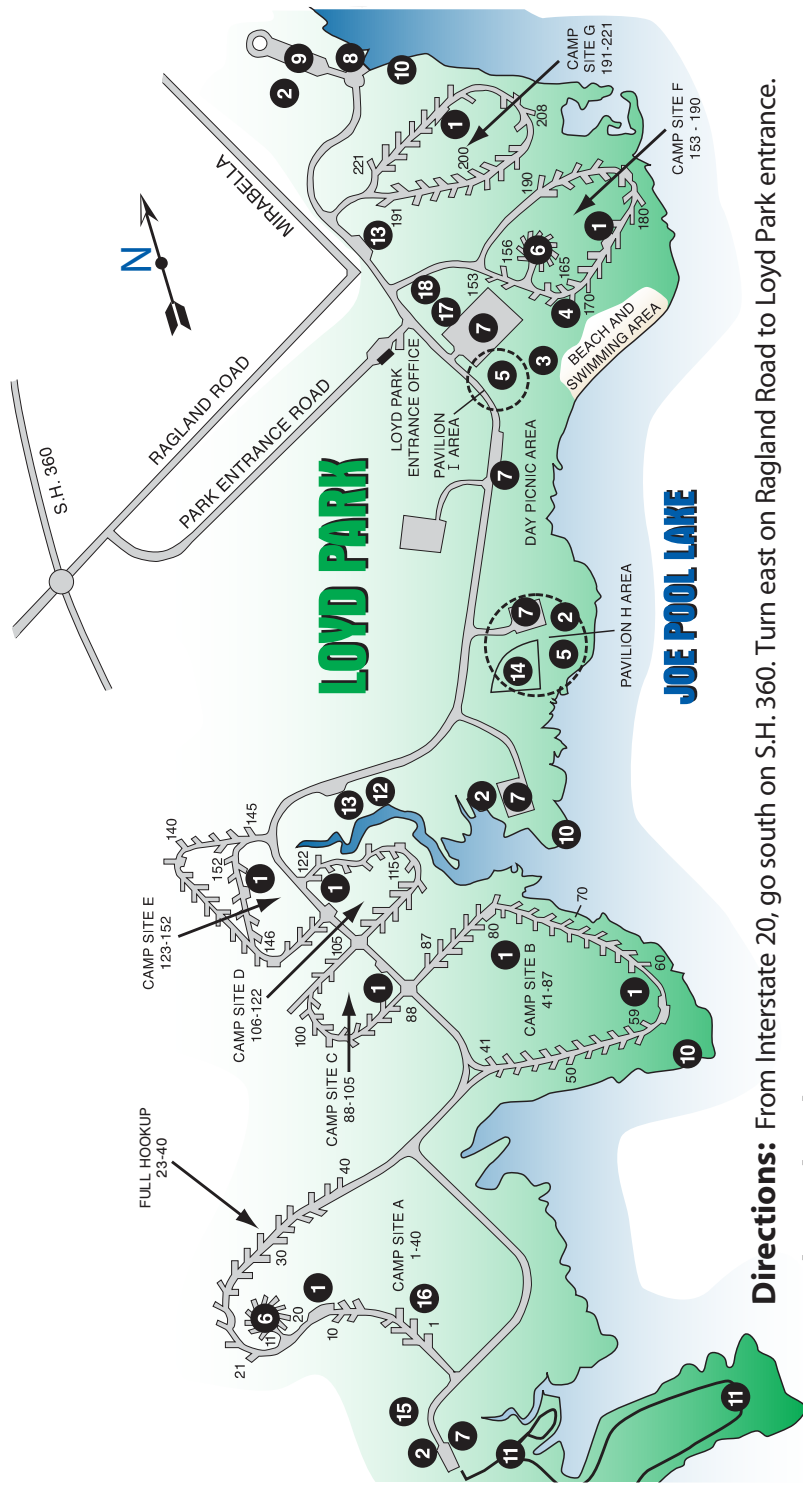
Grand Prairie
TEXAS
PARKS, ARTS & RECREATION



Directions: From Interstate 20, turn south on Great Southwest Pkwy., then merge south on Lake Ridge Pkwy. Lynn Creek Park Entrance is on the left.

Legend - Lynn Creek Park:

- 1. Restroom
- 2. Boat Ramp
- 3. Parking Lot
- 4. Group Picnic Area
- 5. Boat Dock
- 6. Beach Changing House
- 7. Playground
- 8. Concessions



Directions: From Interstate 20, go south on S.H. 360. Turn east on Ragland Road to Loyd Park entrance.

Legend - Loyd Park:

- 1. Showers
- 2. Restroom
- 3. Beach Changing House
- 4. Cabins
- 5. Group Picnic Shelter
- 6. Group Camping Area
- 7. Parking
- 8. Boat Ramp
- 9. Boat Trailer Parking
- 10. Boat Dock
- 11. Hiking Trail
- 12. Foot Bridge
- 13. Sanitary Dump Station
- 14. Softball Field
- 15. Equestrian Trail Parking
- 16. Equestrian Camping
- 17. Camp Store
- 18. Loyd Lodge